

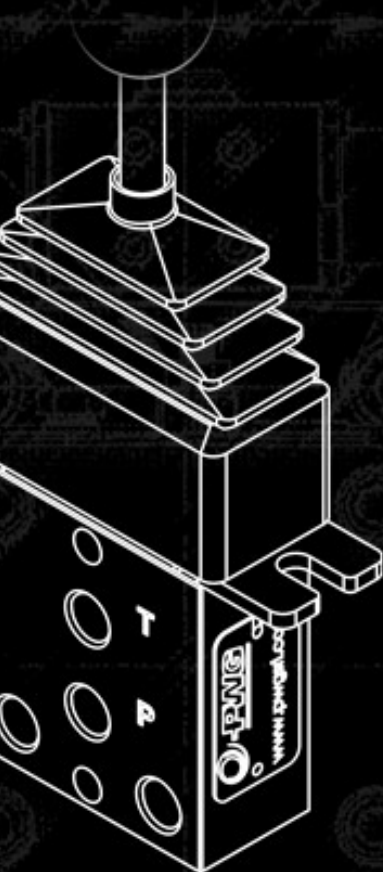


## SERIE J

Manipolatori idraulici  
*Hydraulic remote controls*

## SERIE P

Pedipolatori idraulici  
*Hydraulic control lever*



[TORNA ALL'INDICE / BACK TO INDEX](#)

**MANIPOLATORE IDRAULICO 1 ASSE**  
**HYDRAULIC REMOTE CONTROL 1 AXIS**

**Descrizione prodotto**

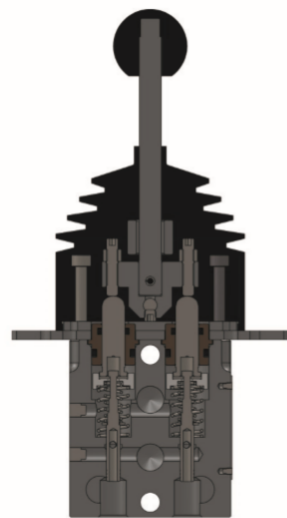
I manipolatori idraulici sono costituiti da due valvole riduttrici ad azione diretta. La leva di comando in posizione centrale mantiene gli utilizzi collegati a scarico e l'alimentazione chiusa. Azionando la leva in un senso, si collega l'alimentazione con l'utilizzo verso il quale la leva viene mossa, la pressione nell'utilizzo è proporzionale alla corsa della leva.

**Product description**

Hydraulic remote controls consist of two direct acting pressure reducing valves. The control lever in neutral position keeps the service ports connected to tank and the pressure inlet port closed. By acting on the control lever in one direction, the inlet pressure port will be connected to the corresponding service port, the service pressure is proportional to the control lever stroke.

**Caratteristiche tecniche**  
**Technical specifications**

Pressione massima in alimentazione <i>Maximum input pressure</i>	bar	<b>100</b>
Pressione massima in scarico <i>Maximum back pressure (tank)</i>	bar	<b>3</b>
Portata olio in alimentazione <i>Oil input capacity</i>	l/min	<b>15</b>
Campo di temperatura olio <i>Oil temperature range</i>	°C	<b>-20 +80</b>
Campo di viscosità <i>Viscosity range</i>	cSt	<b>10-300</b>
Grado di filtrazione consigliato <i>Recommended filtration</i>	µ ass	<b>25</b>
Massa appross. <i>Approx weight</i>	kg	<b>2.2</b>



- **Corpo / Body**
- **Spintore / Pusher**
- **Guida / Guide**
- **Ghisa / Cast iron**
- **Inox / Inox**
- **Ottone / Brass**

**SERIE J - 1A**

**CODICE DI ORDINAZIONE / ORDERING CODE**

<b>J</b>	<b>G</b>	<b>1</b>	<b>CI</b>	<b>BM</b>	<b>35</b>	<b>1</b>		
<b>1 A</b>								

Serie - modello / Series - model	
J - 1A	Joystick 1 asse 1 Joystick axis
J - 2A	Joystick 2 assi 2 Joystick axis
J - 2C	Joystick 2 assi e contro rotazione 2 Joystick axis and reverse rotation

Attacchi / Ports	
G	Metrica (Filetti BSPP) Metric (BSPP Threads)
U	SAE (Filetti UNF) SAE (UNF Threads) A richiesta (quantità minima 50 pezzi) Upon Request (minimum quantity 50 pieces)

Elementi / Elements	
1 +	... Numero degli elementi da 1 - ..... Element number from 1 to - .....

Impugnatura / Handle	
CI	Impugnatura Cilindrica Cylinder grip Solo per J1A - leva corta <b>STANDARD</b> Only for "1A" Joystick - short lever <b>STANDARD</b>
IL	Impugnatura Cilindrica Cylinder grip Solo per J1A - leva lunga Only for "1A" Joystick - long lever
EP	Impugnatura ergonomica + presenza uomo Ergonomic grip + dead man Disponibile solo con 1 elemento Available only with 1 element
XX	Senza impugnatura Without handle

Esecuzioni speciali / Special versions
--

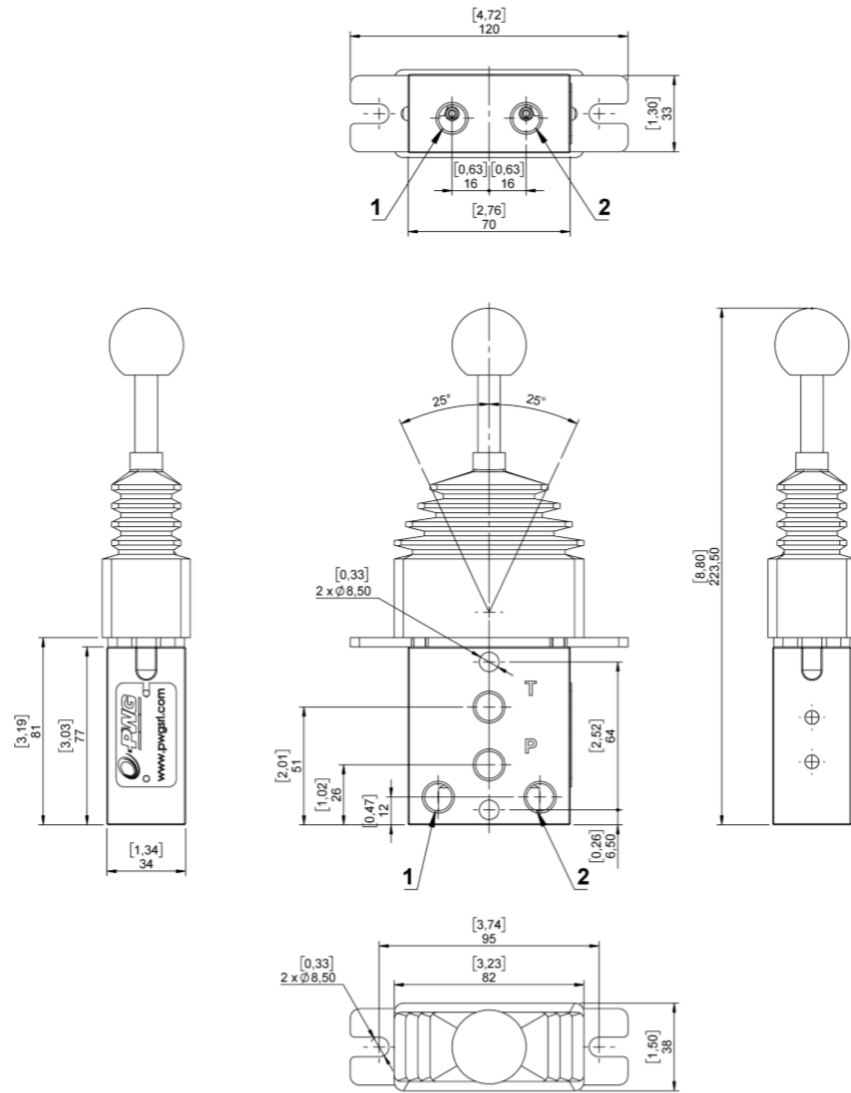
Accessori / Accessories	
1 + 15	Numero dei pulsanti da 1 a 15 Buttons number from 1 to 15

Step finale / Final step	
1	Step Finale <b>STANDARD</b> Final Step <b>STANDARD</b>
X	NO Step Finale NO Final Step

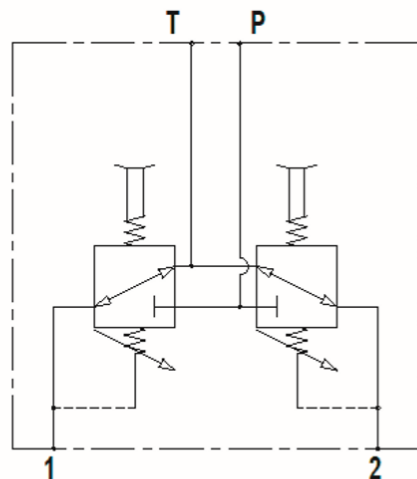
Curve di regolazione / Metering curve	
35	Pressione Partenza = 6,5 Starting pressure = 6,5 Pressione corsa max = 20 Maximum displaced pressure = 20
63	Pressione Partenza = 6,5 Starting pressure = 6,5 Pressione corsa max = 17 Maximum displaced pressure = 17
74	Pressione Partenza = 5 Starting pressure = 5 Pressione corsa max = 14 Maximum displaced pressure = 14
86	Pressione Partenza = 6,5 Starting pressure = 6,5 Pressione corsa max = 19 Maximum displaced pressure = 19
98	Pressione Partenza = 4 Starting pressure = 4 Pressione corsa max = 20 Maximum displaced pressure = 20
Nota: Tolleranza: ± 1 bar Note: Tolerance: ± 1 bar	

Posizionatore / Positioner	
S	Standard con ritorno a molla / Standard with spring back
F	Frizionato / Joystick / Clutch controller
B*	Sblocco al centro / Joystick "1A" Central block / Disponibile solo su versione / Available only on "1A" Joystick version
M	Micro / Joystick "1A" Micro / Disponibile solo su versione / Available only on "1A" Joystick version
D	Detend / Joystick J2A-J2C detend / Disponibile solo su versione J2A-J2C / Available only on J2A-J2C joystick version
Z*	F (frizione) + B (sblocco al centro) + M (micro) / F (friction) + B (security in neutral) + M (micro).
W*	B (sblocco al centro) + M (micro) / B (security in neutral) + M (micro).
Y	F (frizione) + M (micro) / F (friction) + M (micro)
K*	F (frizione) + B (sblocco al centro) / F (friction) + B (security in neutral).
Nota *: Non disponibile con impugnatura ergonomica (EP) Note *: Not available with ergonomic grip (EP)	

Leva corta  
Short lever



SCHEMA IDRAULICO  
HYDRAULIC DIAGRAM

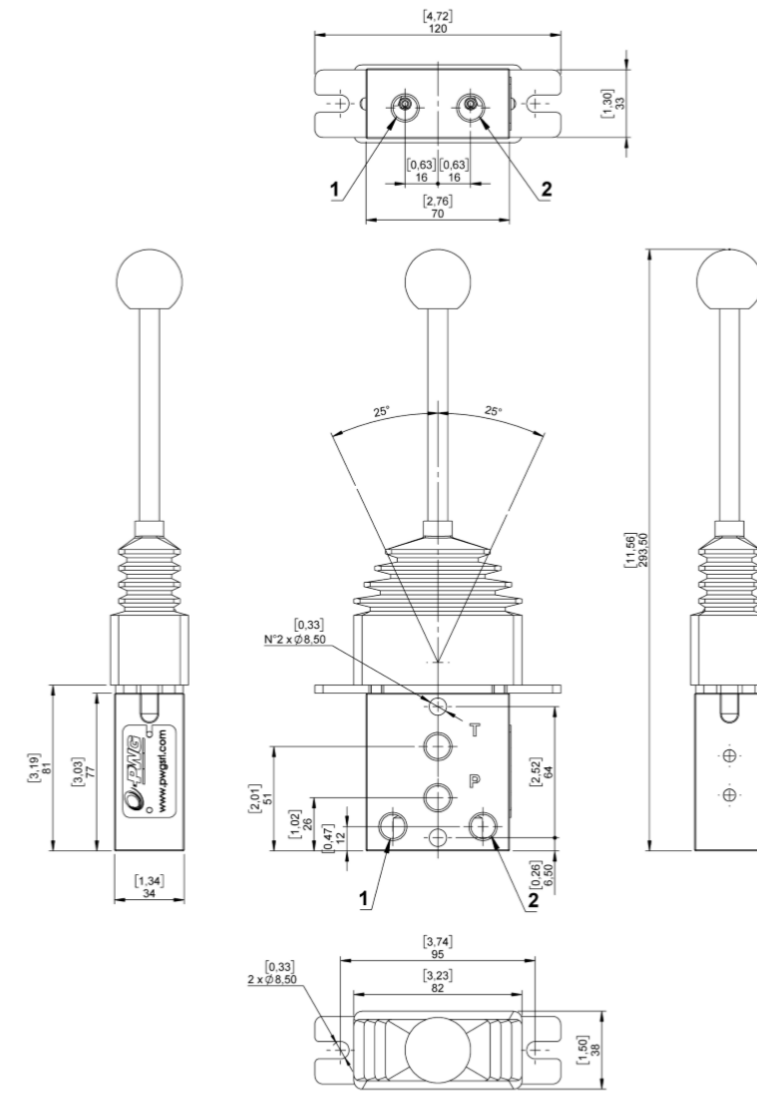


CONNESSIONI  
CONNECTIONS  
P, T, 1, 2 1/4 GAS

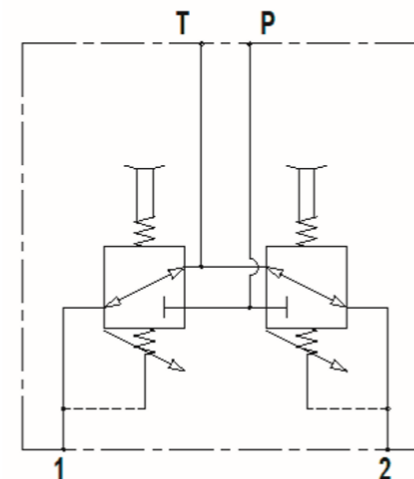
OPZIONI  
OPTIONS

- Frizione / Friction
- Sblocco centrale / Security in neutral
- Microswitch posizione neutra / Sensor in neutral position

Leva lunga  
Long lever



SCHEMA IDRAULICO  
HYDRAULIC DIAGRAM



CONNESSIONI  
CONNECTIONS  
P, T, 1, 2 1/4 GAS

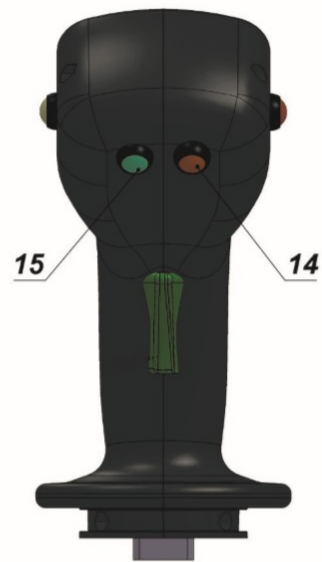
OPZIONI  
OPTIONS

- Frizione / Friction
- Sblocco centrale / Security in neutral
- Microswitch posizione neutra / Sensor in neutral position

COME ORDINARE L'IMPUGNATURA?  
HOW TO ORDER THE ERGONOMIC HANDLE?

SERIE J

DIETRO  
BACK



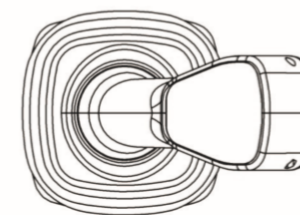
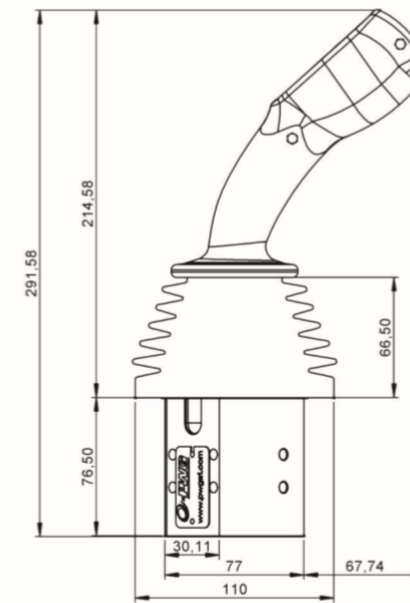
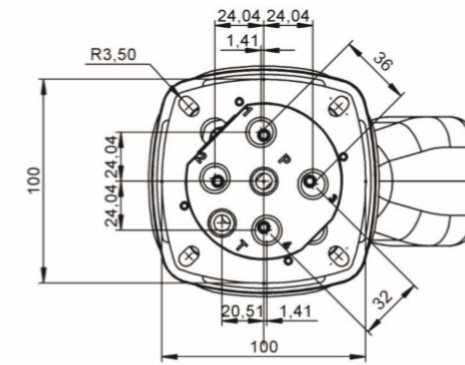
DAVANTI  
FRONT



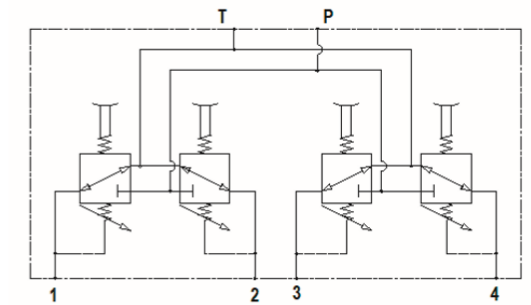
LATO  
SIDE



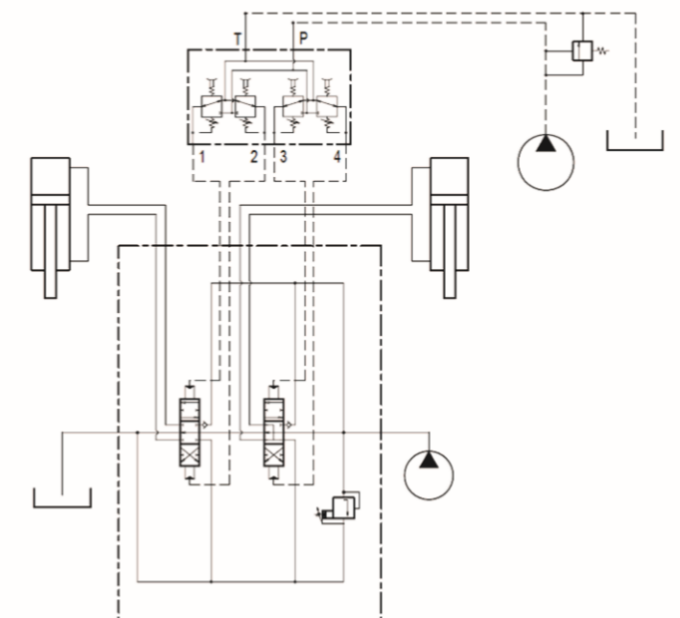
SERIE J - 2A

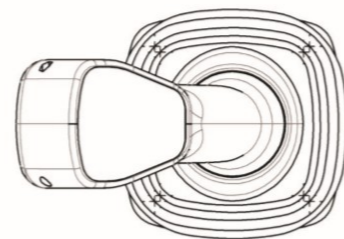
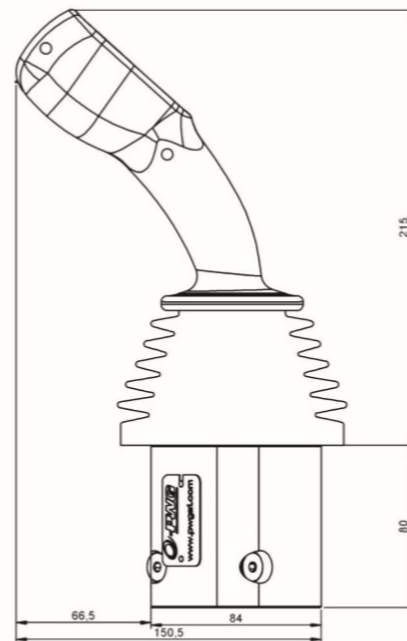
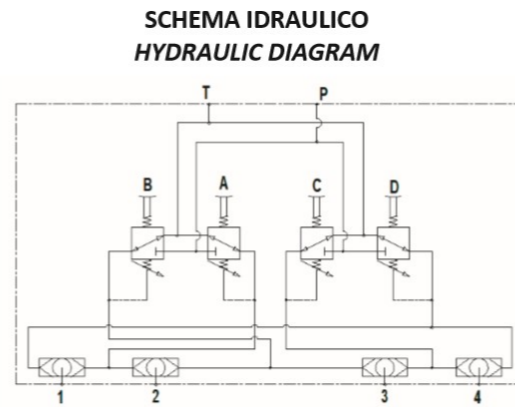
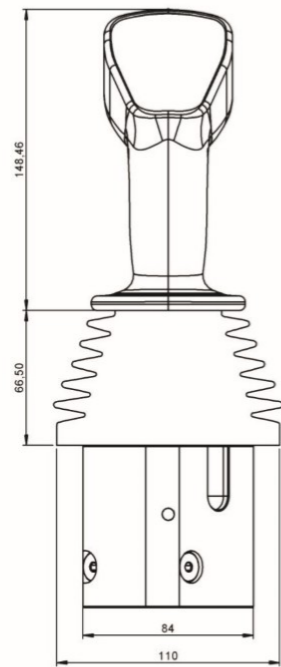
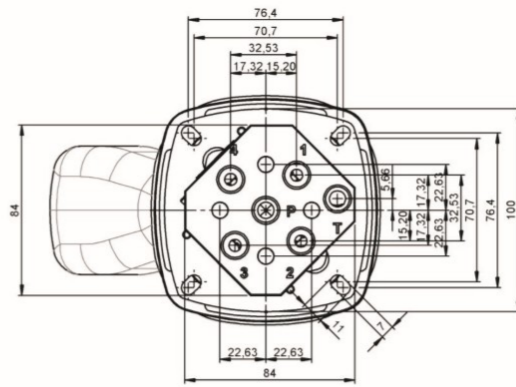


SCHEMA IDRAULICO  
HYDRAULIC DIAGRAM



ALIMENTAZIONI TELECOMANDI CON POMPA AUSILIARIA  
HYDRAULIC REMOTE CONTROL INPUT WITH AUXILIARY PUMP





P 2P	G	S	35	1	X
---------	---	---	----	---	---

Serie - modello / Series - model	
P 1P+	Pedipolatore positivo 1 pedale 1 pedal positive
P 1P-	Pedipolatore negativo 1 pedale 1 pedal negative
P 1P-MM	Pedipolatore inching 1 pedal inching
P 1B	Pedipolatore idraulico basculante Hydraulic control lever foot
P 2P	Pedipolatore 2 pedali 2 pedals

Attacchi / Ports	
G	Metrica (Filetti BSPP) Metric (BSPP Threads)
U	SAE (Filetti UNF) SAE (UNF Threads) A richiesta (quantità minima 50 pezzi) Upon Request (minimum quantity 50 pieces)

Posizionatore / Positioner	
S	Standard con ritorno a molla Standard with spring back

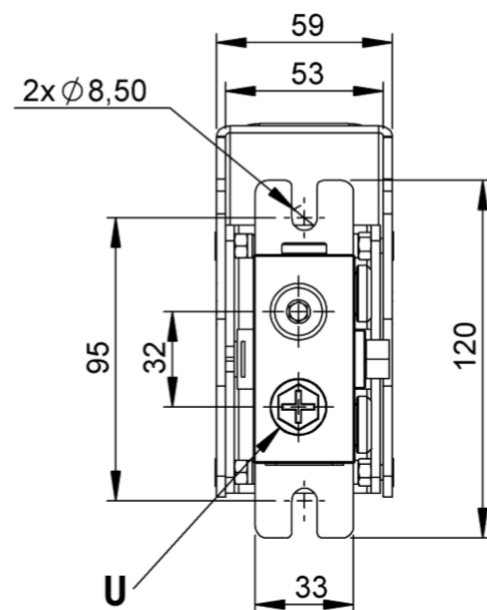
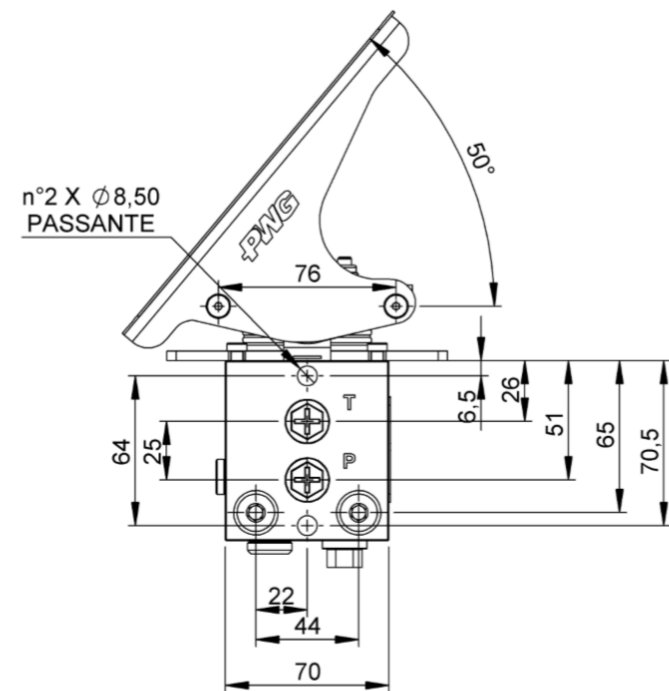
Esecuzioni speciali / Special versions	
--	--

Step finale / Final step	
1	Step Finale <b>STANDARD</b> Final Step <b>STANDARD</b>
X	NO Step Finale NO Final Step

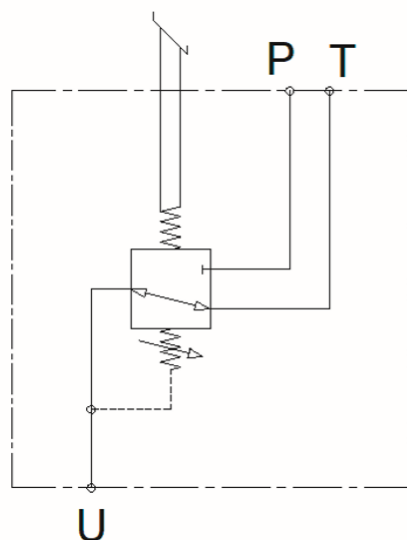
Curve di regolazione / Metering curve	
35	Pressione Partenza = 6,5 Starting pressure = 6,5 Pressione corsa max = 20 Maximum displaced pressure = 20
63	Pressione Partenza = 6,5 Starting pressure = 6,5 Pressione corsa max = 17 Maximum displaced pressure = 17
74	Pressione Partenza = 5 Starting pressure = 5 Pressione corsa max = 14 Maximum displaced pressure = 14
86	Pressione Partenza = 6,5 Starting pressure = 6,5 Pressione corsa max = 19 Maximum displaced pressure = 19
98	Pressione Partenza = 4 Starting pressure = 4 Pressione corsa max = 20 Maximum displaced pressure = 20

**DIMENSIONI**  
**DIMENSIONS**

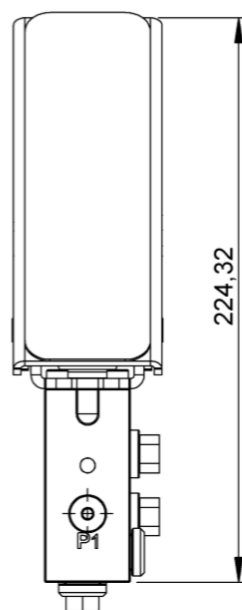
Disegno di ingombro dimensionale  
Dimensional drawing



SCHEMA IDRAULICO  
HYDRAULIC DIAGRAM

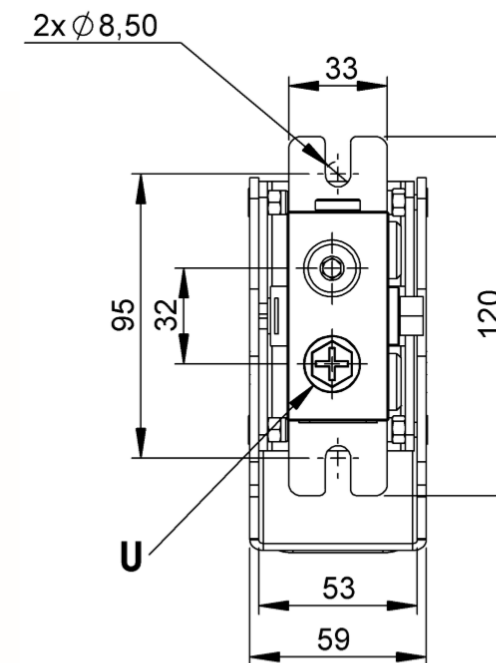
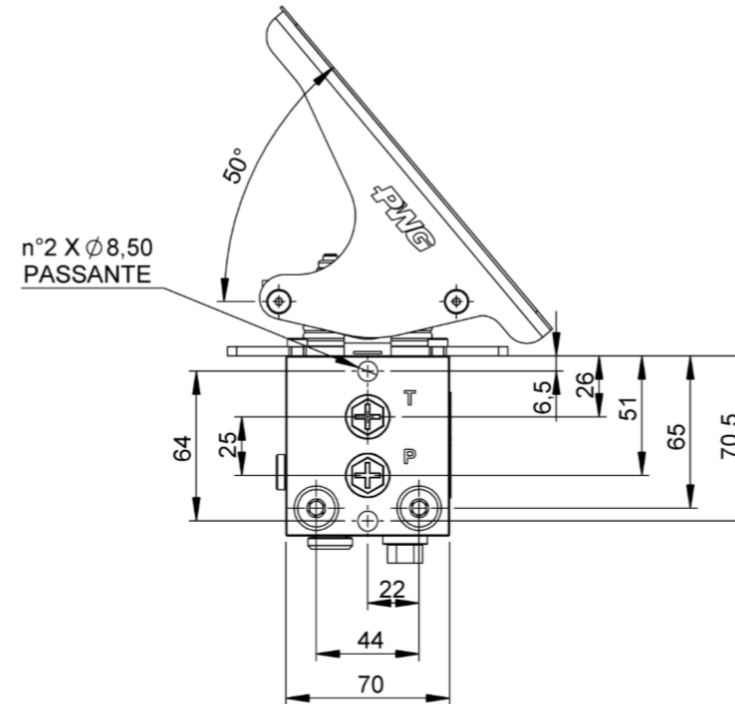


P, T e U: 1/4 G

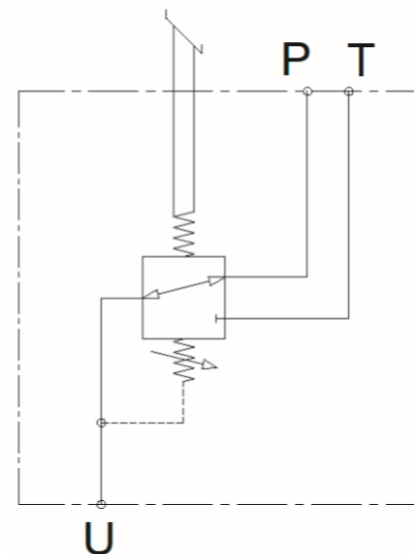


**DIMENSIONI**  
**DIMENSIONS**

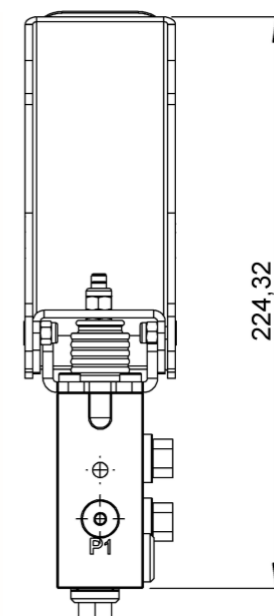
Disegno di ingombro dimensionale  
Dimensional drawing



SCHEMA IDRAULICO  
HYDRAULIC DIAGRAM



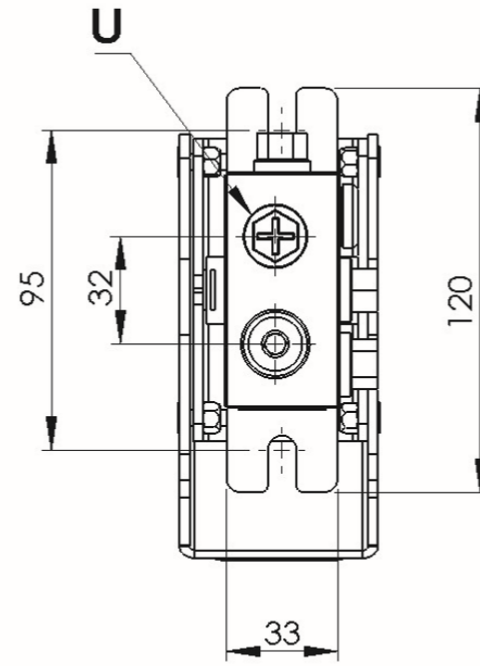
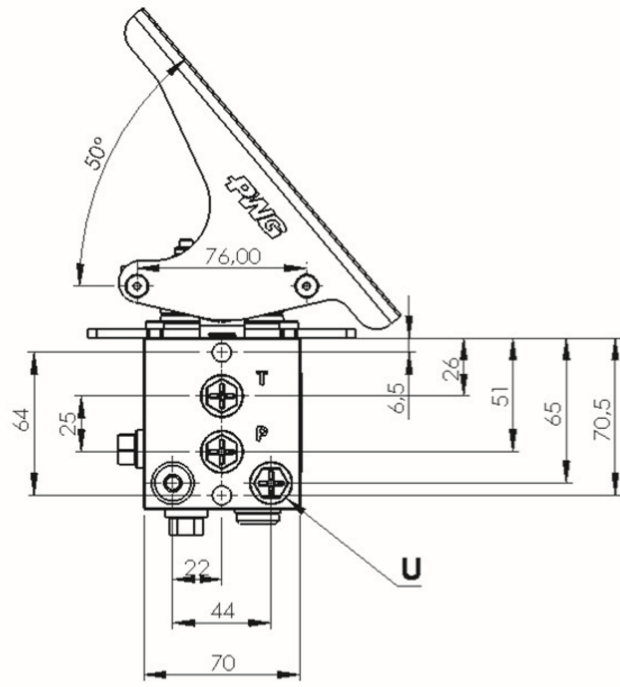
P, T e U: 1/4 G



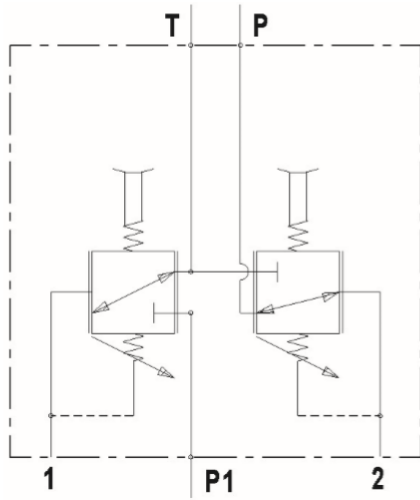
**DIMENSIONI**  
**DIMENSIONS**

Disegno di ingombro dimensionale  
Dimensional drawing

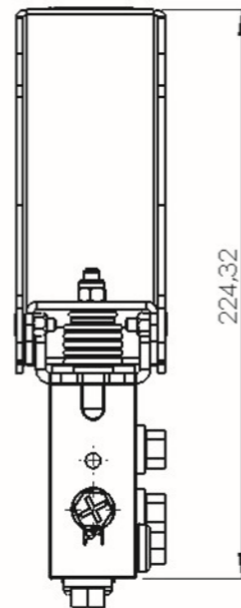
**P 1P-MM**



SCHEMA IDRAULICO  
HYDRAULIC DIAGRAM



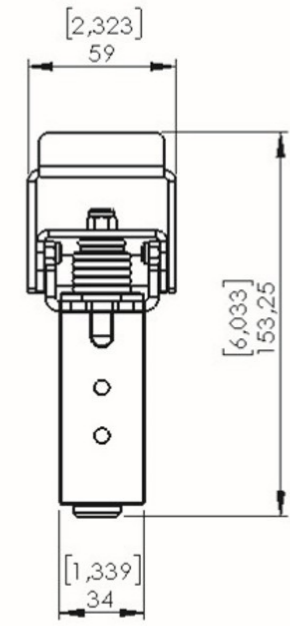
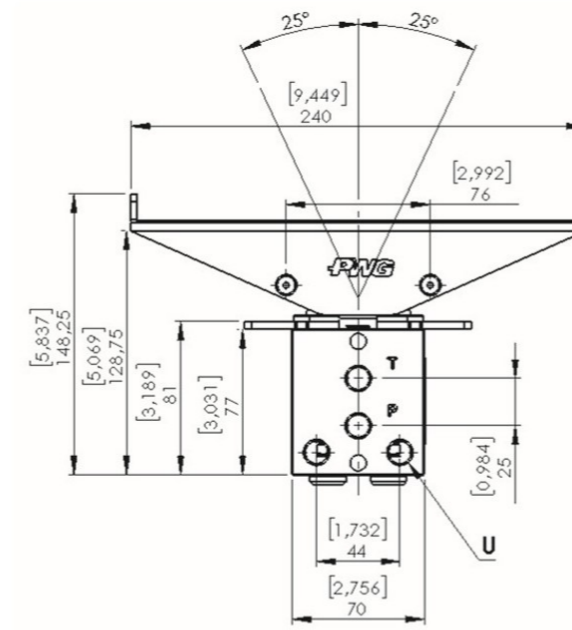
P, T e U: 1/4 G



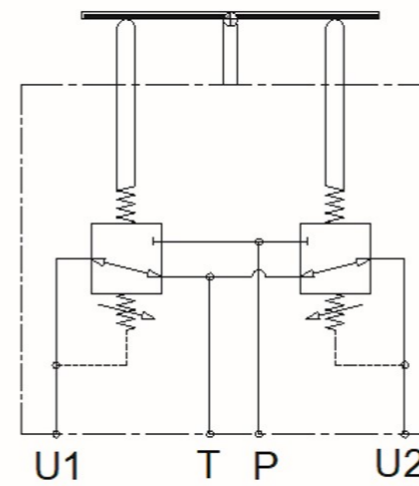
**DIMENSIONI**  
**DIMENSIONS**

Disegno di ingombro dimensionale  
Dimensional drawing

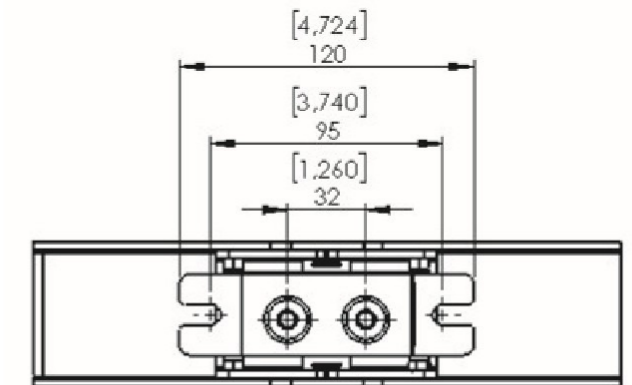
**P 1B**



SCHEMA IDRAULICO  
HYDRAULIC DIAGRAM



P, T e U: 1/4 G



**PEDIPOLATORE IDRAULICO A 2 UTILIZZI CON ATTACCHI INFERIORI**  
**HYDRAULIC CONTROL LEVER FOOT WITH 2 PEDALS AND SERVICE PORTS**

**P - 2P**

**Funzionamento**

I pedipolatori idraulici funzionano secondo il principio delle valvole riduttrici di pressione ad azione diretta. In condizione di riposo il pedale di comando, viene mantenuto in posizione neutra dalla molla di richiamo; l'alimentazione P è chiusa e gli utilizzi sono comunicanti con lo scarico T. Azionando il pedale, lo spintore comprime la molla di richiamo e quella di reazione, generando una corsa della spola di regolazione la quale apre il passaggio che collega l'attacco P e l'utilizzo determinando un incremento di pressione proporzionale alla corsa del pedale e del tipo di molla di reazione.

**Applicazioni**

- Pilotaggio e regolazione a distanza di:
- distributori oleodinamici
  - pompe e motori a portata variabile
  - valvole ausiliarie
  - frizioni e freni idraulici

**Operating principle**

Hydraulic remote control works according to the principle of direct-acting pressure reducing valves. In rest position, the foot pedal is held in neutral by return spring; inlet port P is closed and ports are connected to tank port T. By selecting foot pedal, plunger compresses return spring and reaction spring; consequently it shifts spool and opens connection holes between inlet port P and service ports. This causes a pressure increase on service ports that is proportional to the foot pedal stroke and the reaction spring.

**Applications**

- Piloting remote of:
- directional control valve
  - variable displacements pumps and motors
  - auxiliary valves
  - frictions and hydraulic brakes

**Caratteristiche tecniche**  
**Technical specifications**

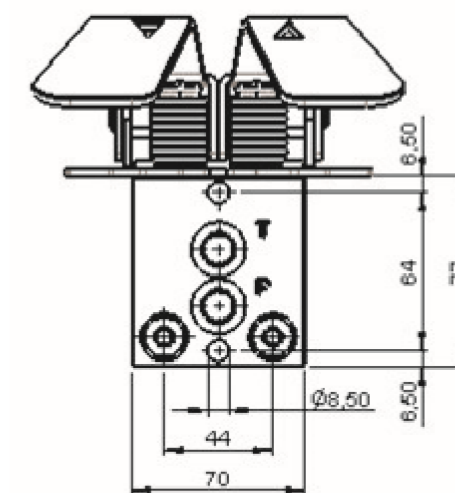
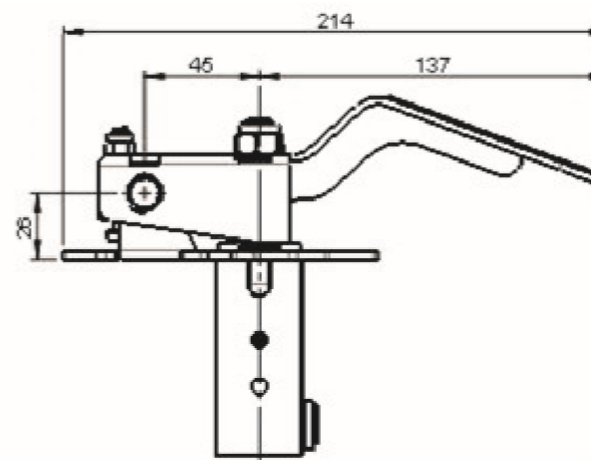
SERIE		P - 2P
Pressione massima <i>Maximum pressure</i>	bar	100
	psi	1450
Pressione massima in scarico <i>Maximum back pressure on take line</i>	bar	3
	psi	44
Peso <i>Weight</i>	kg	3,2
Isteresi <i>Hysteresis</i>	bar	0,5
	psi	7,25
Portata olio in alimentazione <i>Oil input capacity</i>	l/min	16
	GPM	4,2
Fluido idraulico <i>Hydraulic fluid</i>	Olio minerale Mineral oil	
Campo di temperatura del fluido <i>Fluid temperature range</i>	°C	-20 +80
Campo di viscosità del fluido <i>Fluid viscosity range</i>	Cst	10÷300
Grado di filtrazione consigliato <i>Recommended filtration</i>	μ	25
Tubazioni di pilotaggio consigliate <i>Recommended operating pipes</i>	mm rigid 1/4" BSP flexible	Ø8
Trafilamento <i>Leakage</i>	cc/min (50 bar)	3

- **Corpo / Body**
- **Ghisa / Cast Iron**
- **Protezione superficiale / Surface coating**
- **Spintore / Plunger**
- **Acciaio inox / Stainless steel**
- **Guida spintore / Plunger guide**
- **Ottone / Brass**

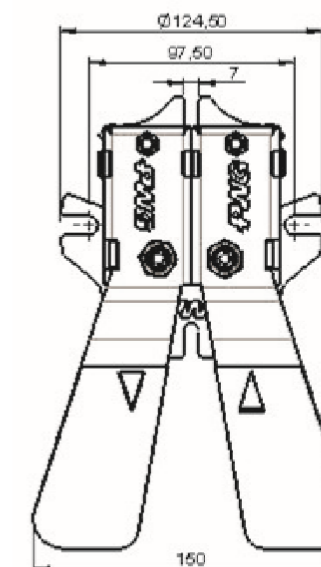
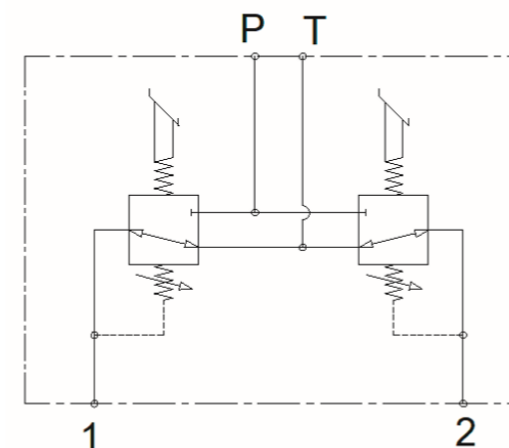
**DIMENSIONI**  
**DIMENSIONS**

**P - 2P**

**Disegno di ingombro dimensionale**  
**Dimensional drawing**



**SCHEMA IDRAULICO**  
**HYDRAULIC DIAGRAM**





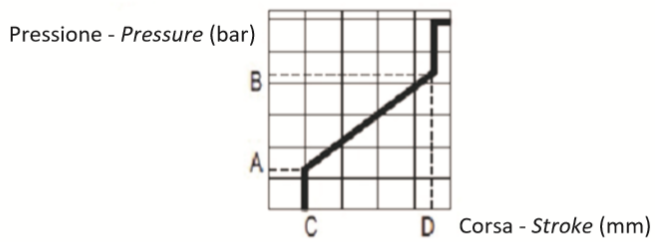
**Curva di regolazione**

**Metering curve**



**GRAFICO - DIAGRAM**

**DESCRIZIONE - DESCRIPTION**



Curve di regolazione con  
caratteristica lineare con step  
*Linear metering curve with step*