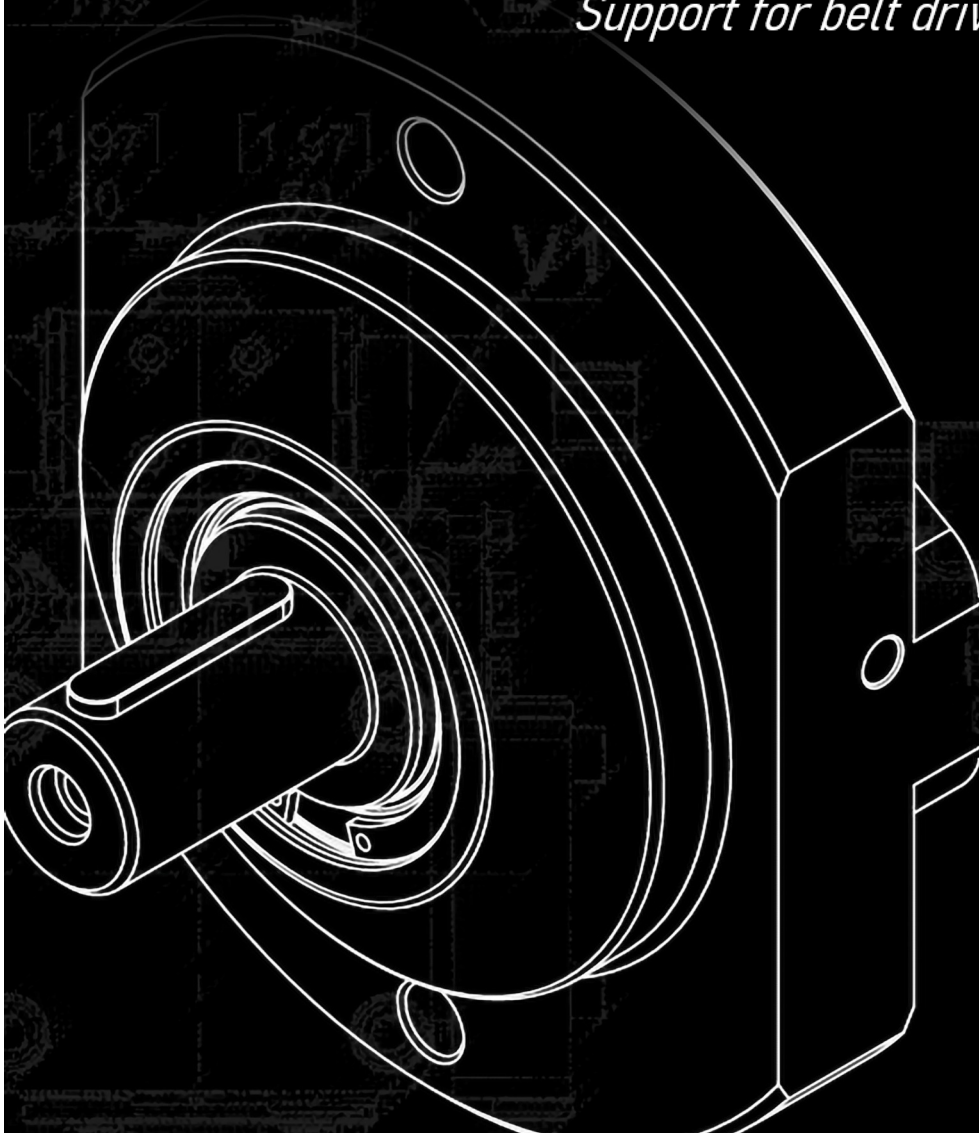


**PWG00006000**

Supporto tiro-cinghia  
*Support for belt drive*



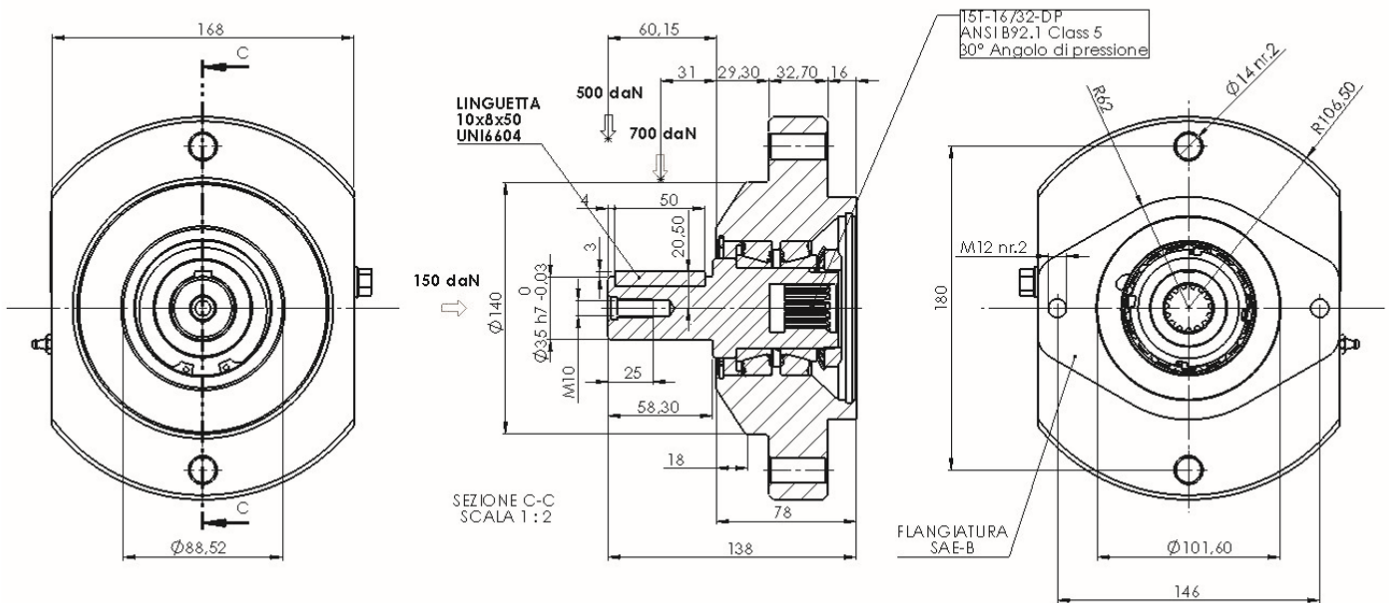
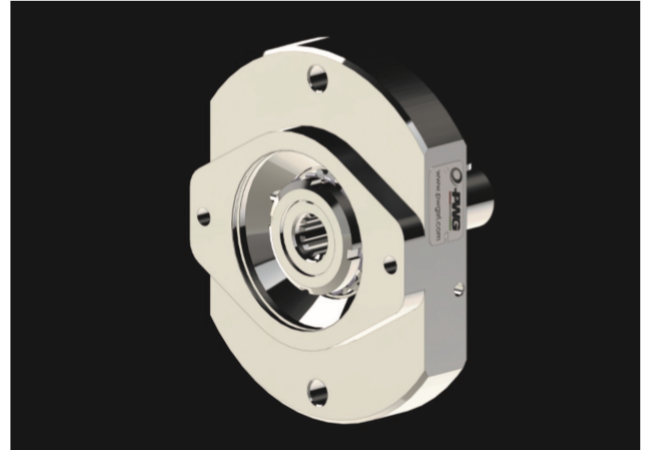
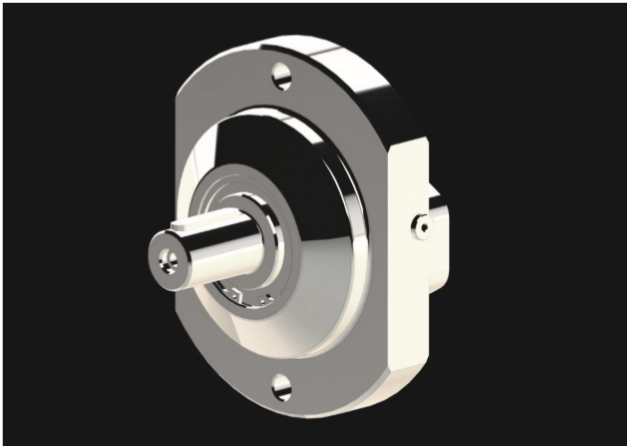
**TORNA ALL'INDICE / BACK TO INDEX**

**SUPPORTO TIRO-CINGHIA**  
**SUPPORT FOR BELT DRIVE**

**PWG00006000**

I supporti tiro-cinghia vengono utilizzati per la trasmissione del moto di motori idraulici tramite cinghie o catene in cui sono presenti forti carichi radiali. Essi vengono flangiati direttamente al motore, e l'accoppiamento viene fatto mediante semigiunto scanalato.

The support for belt drive are used for the power transmission, connecting hydraulic motors to belt drives or gear drives, and allow to tension the open drive system. They are directly flanged to the motor, and the coupling is done by splined half-coupling.



FORNITO NON INGRASSATO SUPPLIED NOT GREASED	
GRASSO DA AGGIUNGERE GREASE TO ADD	20 [gr]
VELOCITA' MASSIMA DI ROTAZIONE MAXIMUM ROTATION SPEED	3600 [g/min]